

# SERIES 7200

## FULL PORT BALL VALVES

## Design

### Body

- Stainless Steel (A351-CF8M)
- Carbon Steel (A216-WCB)

### Stem

- 316 Stainless Steel

### ISO 5211 Mounting Plate

### Seat

- TFM\*
- RPTFE
- PEEK
- ALTA

### Packing

- PTFE\*
- Graphite

### Anti-Static Stem

### Ball

- 316 Stainless Steel

## DESIGN CHARACTERISTICS

### BODY:

The Series 7200 ball valve features a two piece cast body which allows the valve to be easily disassembled for repairs or replacements. The body design is built to the ASME/ANSI B16.34 with materials meeting NACE MR0175 and with flanges designed to ASME B16.5 Class 150 and 300.

### MOUNTING PLATE:

The mounting plate is designed to the ISO 5211 standard for the direct mounting of actuators, most gear operators and accessories.

### ANTI-STATIC STEM

The stem is designed with an anti-static ball device that maintains constant metal contact with body and ball/stem assembly. This constant contact eliminates the possibility of static spark, if the body and pipe are properly grounded.

### SEATS:

The seats can be serviced in the field and are replicable. When servicing the seats, a seat rebuild kit will be necessary.

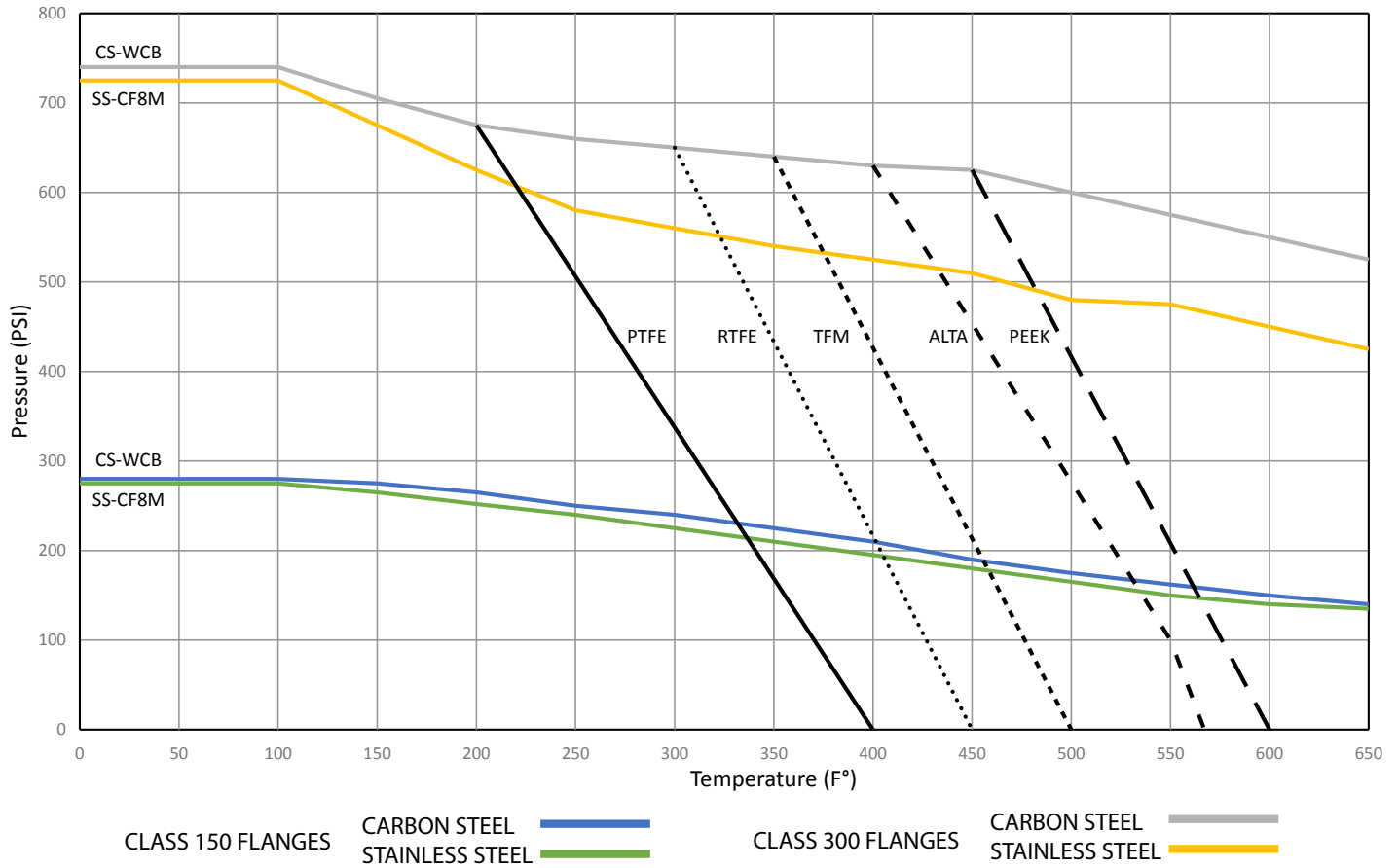
### PACKING:

The packing offers proper alignment for the stem in the valve body and reduces the torque of the valve. The V-cup packing design offers great sealing properties with the stem and body. Different materials are offered for the packing rings.

### BI-DIRECTIONAL SERVICE:

The Series 7200 ball valves are qualified for bi-directional use in ANSI Class 150 and 300 service.

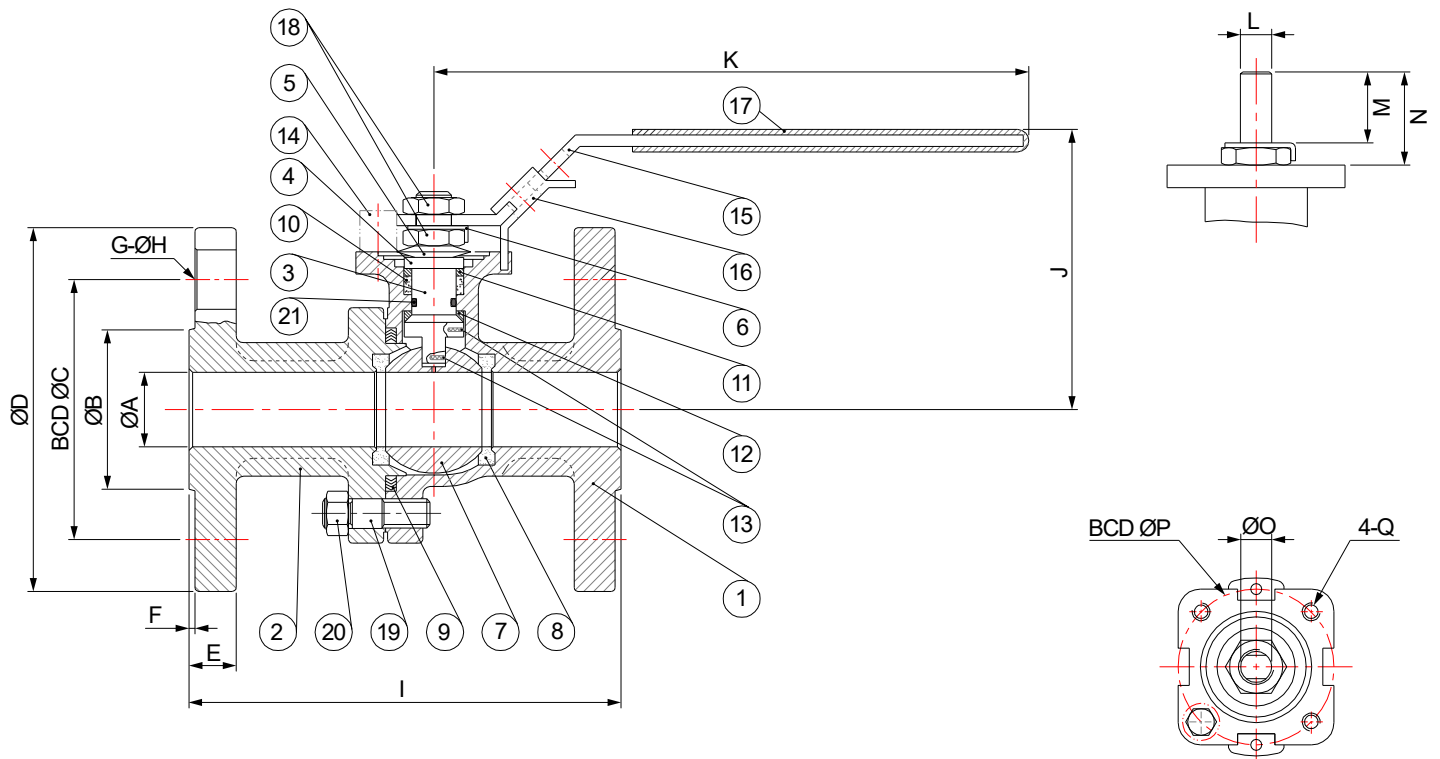
## SEAT PRESSURE / TEMPERATURE RATING



## SEAT TEMPERATURE RATINGS

Material	Temperature Rating °C (°F)
PTFE	4 to 121 (40 to 250)
RPTFE	-20 to 232 (-4 to 450)
TFM	-20 to 260 (-4 to 500)
PEEK	-20 to 315 (-4 to 600)
ALTA	-20 to 302 (-4 to 575)

## Valve Dimensions for 1/2" to 2" (Class 150)



DIMENSIONS (INCH)																	
SIZE		CLASS 150															
IN	A	B	C	D	E	F	G	H	I	J	K	L	M	N	O	P	Q
.5"	0.59	1.38	2.38	3.50	0.44	0.06	4	0.63	4.25	2.60	6.50	0.25	0.31	0.55	0.37	1.65	M5X0.8
.75"	0.79	1.69	2.76	3.86	0.50	0.06	4	0.63	4.61	2.91	6.50	0.25	0.31	0.55	0.37	1.65	M5X0.8
1"	0.98	2.01	3.13	4.25	0.56	0.06	4	0.63	5.00	3.43	7.87	0.31	0.43	0.75	0.43	1.97	M6X1.0
1¼"	1.26	2.52	3.50	4.63	0.63	0.06	4	0.63	5.51	3.62	7.87	0.31	0.43	0.75	0.43	1.97	M6X1.0
1½"	1.50	2.87	3.88	5.00	0.69	0.06	4	0.63	6.50	4.13	9.84	0.37	0.65	0.91	0.62	2.76	M8X1.25
2"	1.97	3.62	4.74	5.98	0.75	0.06	4	0.63	7.01	4.53	10.43	0.37	0.65	0.91	0.62	2.76	M8X1.25

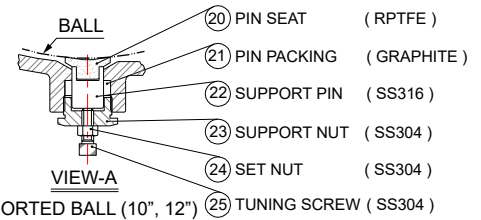
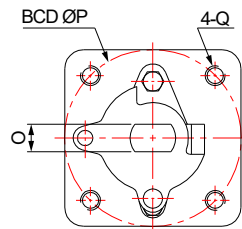
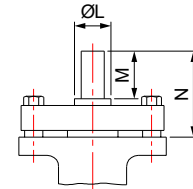
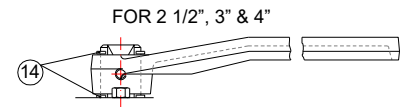
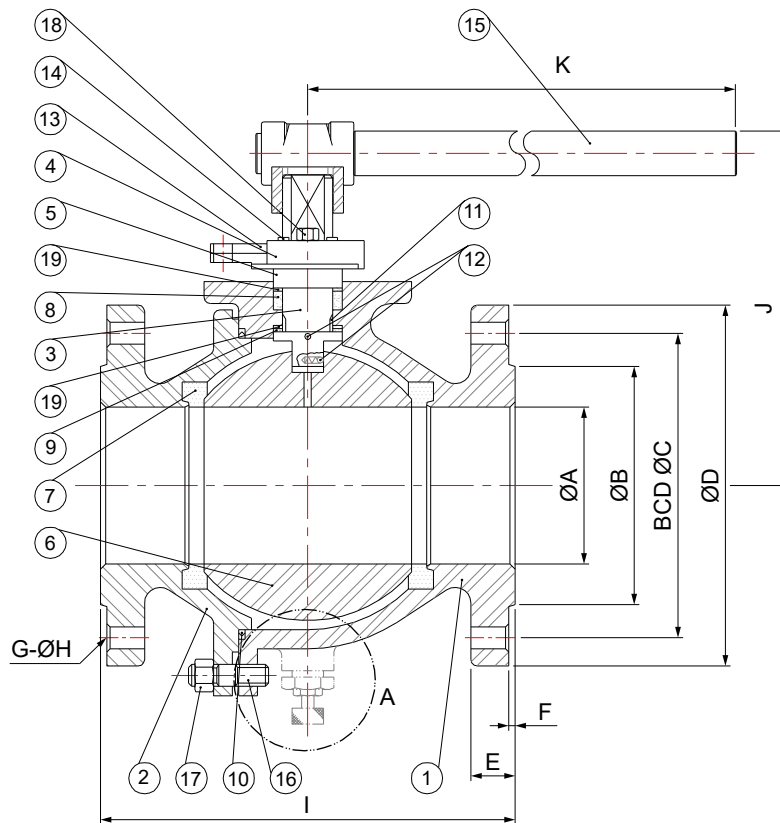
## VALVE MATERIAL LIST (1/2"-2")

NO.	PART	MATERIAL		QTY.
		STAINLESS STEEL	CARBON STEEL	
1	BODY	A351-CF8M	A216-WCB	1
2	CAP	A351-CF8M	A216-WCB	1
3	STEM	SS316		1
4	PACKING GLAND	SS304		1
5	BELLEVILLE WASHER	SS301		2
6	LOCK WASHER	SS304		1
7	BALL	A351-CF8M		1
8	SEAT	TFM		2
9	BODY SEAL	SPIRAL WOUND WIRE (SS316/GRAPHITE)		1
10	PACKING	RPTFE		3~4
11	PACKING WASHER	50% PTFE / 50% SS316		1
12	THRUST BEARING	RPTFE		1
13	ANTI-STATIC DEVICE	SS316		2
14	TRAVEL STOP	SS304		1
15	HANDLE	SS304		1
16	LEVER LOCK	SS304		1
17	PLASTIC COVER	PLASTIC		1
18	STEM NUT	SS304		2
19	BODY STUD	SS304 (B8)	CARBON STEEL (B7)	4
20	BODY NUT	SS304 (8)	CARBON STEEL (2H)	4
21	O-RING	VITON		1

## TORQUE AND WEIGHTS

IN	DIN	Torque (lb-in)	Weight (lb)
		Class 150	Class 150
1/2"	15	87	4
3/4"	20	95	5
1"	25	113	7
1-1/4"	30	260	10
1-1/2"	40	434	13
2"	50	521	20

## Valve Dimensions for 2-1/2" to 12" (Class 150)



VIEW-A  
SUPPORTED BALL (10", 12") (25) TUNING SCREW (SS304)

DIMENSIONS (INCH)																	
SIZE		CLASS 150															
IN	A	B	C	D	E	F	G	H	I	J	K	L	M	N	O	P	Q
2½"	2.56	4.13	5.49	7.01	0.88	0.06	4	0.75	7.48	6.50	15.35	1.10	1.75	3.07	0.67	4.02	M10X1.5
3"	2.99	5.00	6.00	7.48	0.94	0.06	4	0.75	7.99	6.54	15.35	1.10	1.75	3.07	0.67	4.02	M10X1.5
4"	4.00	6.18	7.50	9.02	0.94	0.06	8	0.75	9.02	7.20	15.35	1.10	1.75	3.07	0.67	4.02	M10X1.5
6"	5.98	8.50	9.51	10.98	1.00	0.06	8	0.87	15.51	11.22	25.59	1.71	1.65	3.58	1.02	4.92	M12X1.75
8"	7.87	10.63	11.75	13.50	1.13	0.06	8	0.87	17.99	11.57	37.40	1.71	1.65	3.58	1.02	4.92	M12X1.75
10"	9.84	12.76	14.25	15.98	1.19	0.06	12	0.98	20.98	14.65	43.31	1.97	2.13	3.86	1.38	5.51	M16X2.0
12"	11.81	15.00	17.01	19.02	1.25	0.06	12	0.98	24.02	16.26	43.31	1.97	2.13	3.86	1.38	5.51	M16X2.0

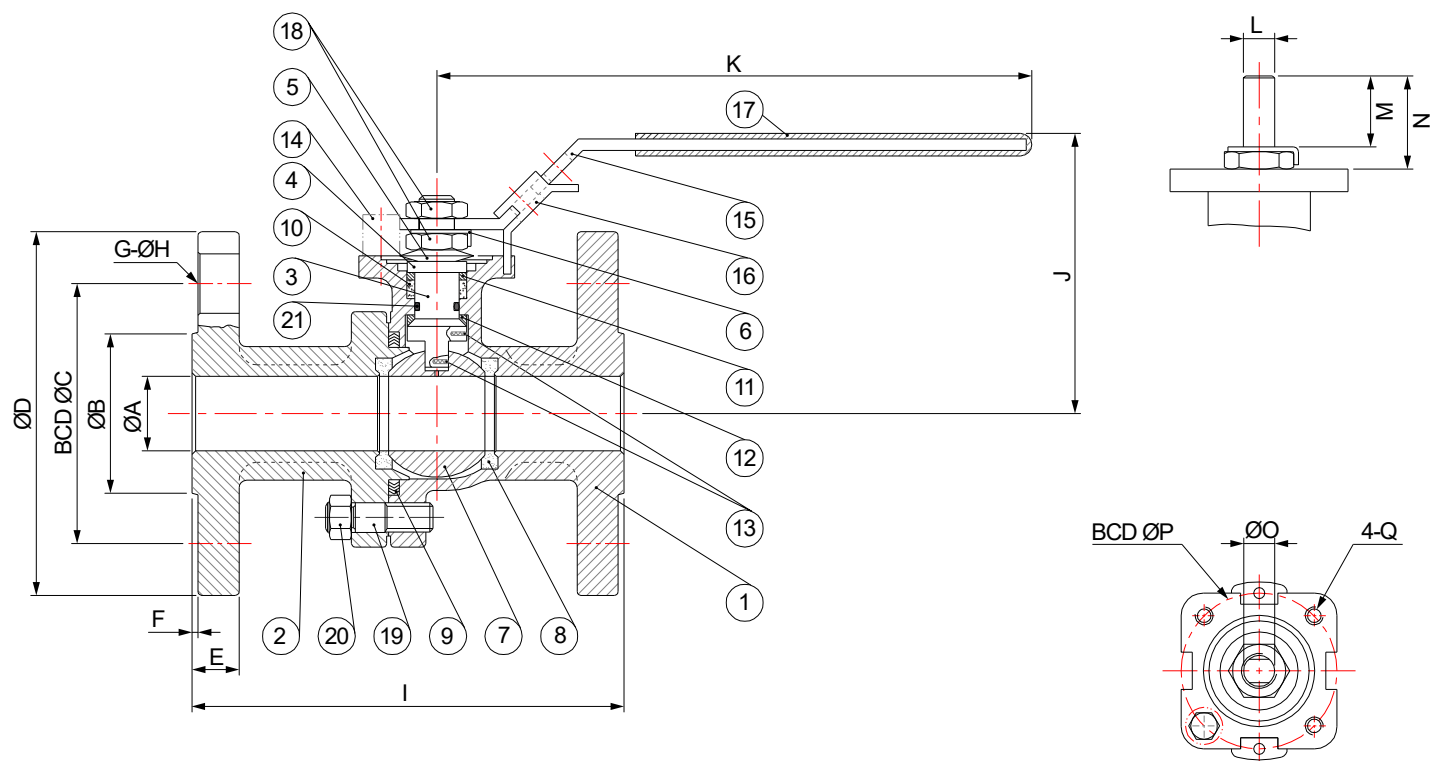
## VALVE MATERIAL LIST (2-1/2"-12")

NO.	PART	MATERIAL		QTY.
		STAINLESS STEEL	CARBON STEEL	
1	BODY	A351-CF8M	A216-WCB	1
2	CAP	A351-CF8M	A216-WCB	1
3	STEM	SS316	SS304	1
4	PACKING GLAND	A351-CF8	A216-WCB	1
5	PACKING SLEEVE	SS304	CARBON STEEL	1
6	BALL	A351-CF8M		1
7	SEAT	RPTFE		2
8	PACKING	RPTFE		1
9	THRUST WASHER	RPTFE		1
10	BODY SEAL	SPIRAL WOUND WIRE (SS316/GRAPHITE)		1
11	STEM BEARING	RPTFE		1
12	ANTI-STATIC DEVICE	SS316		2
13	TRAVEL STOP	SS304	ZINC PLATED CS	1
14	SNAP RING	SS304		1~2
15	HANDLE	JUNCTION HEAD (FCD) / PIPE GRIP (S15C)		1
16	BODY STUD	SS304 (B8)	CARBON STEEL (B7)	4~20
17	BODY NUT	SS304 (8)	CARBON STEEL (2H)	4~20
18	GLAND BOLT	SS304	CARBON STEEL	2
19	PACKING WASHER	50% PTFE / 50% SS316		6~20

## TORQUE AND WEIGHTS

IN	DIN	Torque (lb-in)	Weight (lb)
		Class 150	Class 150
2-1/2"	65	651	34
3"	75	868	37
4"	100	1128	62
6"	150	3125	160
8"	200	4774	292
10"	250	6944	540
12"	300	9114	657

# Valve Dimensions for 1/2" to 2" (Class 300)



DIMENSIONS (INCH)																	
SIZE		CLASS 300															
IN	A	B	C	D	E	F	G	H	I	J	K	L	M	N	O	P	Q
.5"	0.59	1.38	2.62	3.74	0.56	0.06	4	0.63	5.51	2.60	6.50	0.25	0.31	0.55	0.37	1.65	M5X0.8
.75"	0.79	1.69	3.25	4.61	0.63	0.06	4	0.75	5.98	2.91	6.50	0.25	0.31	0.55	0.37	1.65	M5X0.8
1"	0.98	2.01	3.50	4.88	0.69	0.06	4	0.75	6.50	3.43	7.87	0.31	0.43	0.75	0.43	1.97	M6X1.0
1¼"	1.26	2.52	3.88	5.24	0.75	0.06	4	0.75	7.01	3.62	7.87	0.31	0.43	0.75	0.43	1.97	M6X1.0
1½"	1.50	2.87	4.51	6.14	0.81	0.06	4	0.87	7.48	4.13	9.84	0.37	0.55	0.91	0.62	2.76	M8X1.25
2"	1.97	3.62	5.00	6.50	0.88	0.06	8	0.75	8.50	4.53	10.43	0.37	0.55	0.91	0.62	2.76	M8X1.25

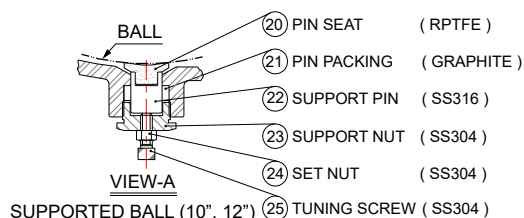
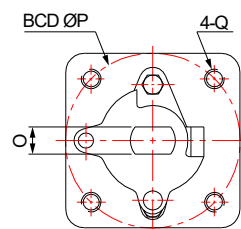
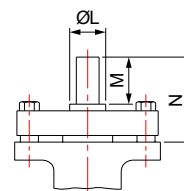
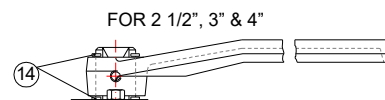
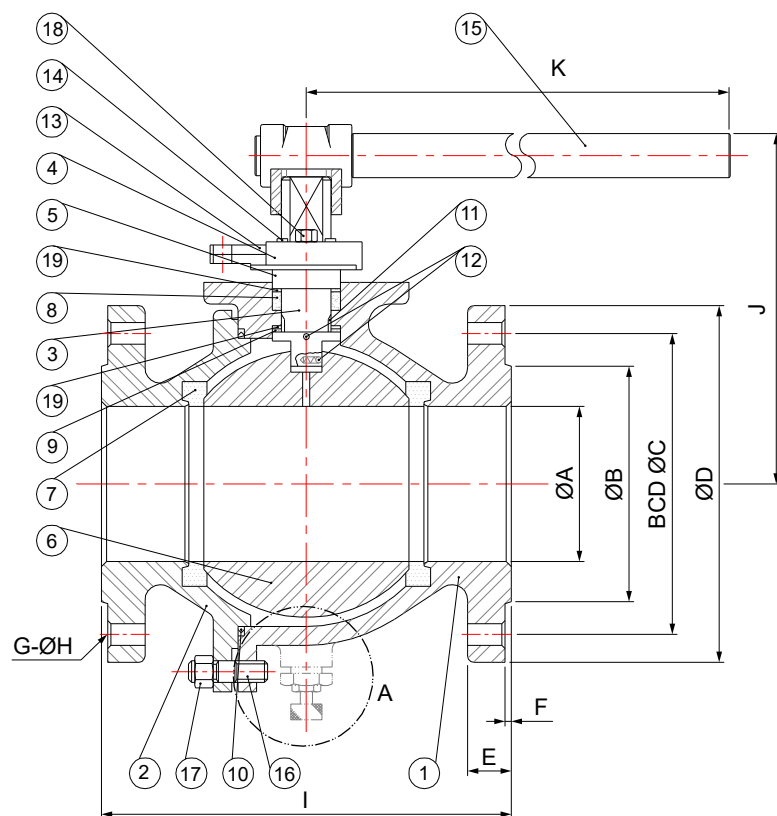
## VALVE MATERIAL LIST (1/2"-2")

NO.	PART	MATERIAL		QTY.
		STAINLESS STEEL	CARBON STEEL	
1	BODY	A351-CF8M	A216-WCB	1
2	CAP	A351-CF8M	A216-WCB	1
3	STEM	SS316		1
4	PACKING GLAND	SS304		1
5	BELLEVILLE WASHER	SS301		2
6	LOCK WASHER	SS304		1
7	BALL	A351-CF8M		1
8	SEAT	TFM		2
9	BODY SEAL	SPIRAL WOUND WIRE (SS316/GRAPHITE)		1
10	PACKING	RPTFE		3~4
11	PACKING WASHER	50% PTFE / 50% SS316		1
12	THRUST BEARING	RPTFE		1
13	ANTI-STATIC DEVICE	SS316		2
14	TRAVEL STOP	SS304		1
15	HANDLE	SS304		1
16	LEVER LOCK	SS304		1
17	HANDLE COVER	PLASTIC		1
18	STEM NUT	SS304		2
19	BODY STUD	SS304 (B8)	CARBON STEEL (B7)	4
20	BODY NUT	SS304 (8)	CARBON STEEL (2H)	4
21	O-RING	VITON		1

## TORQUE AND WEIGHTS

IN	DIN	Torque (lb-in)	Weight (lb)
		Class 300	Class 300
1/2"	15	95	5
3/4"	20	105	7
1"	25	122	10
1-1/4"	30	304	13
1-1/2"	40	478	19
2"	50	565	24

## Valve Dimensions for 2-1/2" to 12" (Class 300)



DIMENSIONS (INCHES)																	
SIZE		CLASS 300															
IN	A	B	C	D	E	F	G	H	I	J	K	L	M	N	O	P	Q
2½"	2.56	4.13	5.87	7.48	1.00	0.06	8	0.87	9.49	6.22	15.35	1.10	1.75	3.07	0.67	4.02	M10X1.5
3"	3.15	5.00	6.61	8.27	1.13	0.06	8	0.87	11.14	6.54	15.35	1.10	1.75	3.07	0.67	4.02	M10X1.5
4"	3.94	6.18	7.87	10.00	1.25	0.06	8	0.87	12.01	7.20	15.35	1.10	1.75	3.07	0.67	4.02	M10X1.5
6"	5.91	8.50	10.63	12.52	1.44	0.06	12	0.87	15.87	11.22	25.59	1.71	1.65	3.58	1.20	4.92	M12X1.75
8"	7.87	10.63	12.99	15.00	1.63	0.06	12	0.98	19.76	12.72	37.40	1.71	1.65	3.58	1.20	4.92	M12X1.75
10"	9.84	12.76	15.26	17.48	1.88	0.06	16	1.14	22.36	14.49	43.31	2.17	2.13	3.86	1.38	5.51	M16X2.0
12"	11.81	15.00	17.76	20.51	2.00	0.06	16	1.26	25.51	16.06	43.31	2.17	2.13	3.86	1.38	5.51	M16X2.0

## TORQUE AND WEIGHTS

IN	DIN	Torque (lb-in)	Weight (lb)
		Class 300	Class 300
2-1/2"	65	695	41
3"	75	955	67
4"	100	1215	99
6"	150	3472	241
8"	200	5208	380
10"	250	7378	703
12"	300	9548	860

## VALVE MATERIAL LIST (2-1/2"-12")

NO.	PART	MATERIAL		QTY.
		STAINLESS STEEL	CARBON STEEL	
1	BODY	A351-CF8M	A216-WCB	1
2	CAP	A351-CF8M	A216-WCB	1
3	STEM	SS316	SS304	1
4	PACKING GLAND	A351-CF8	A216-WCB	1
5	PACKING SLEEVE	SS304	CARBON STEEL	1
6	BALL	A351-CF8M		1
7	SEAT	RPTFE		2
8	PACKING	RPTFE		1
9	THRUST WASHER	RPTFE		1
10	BODY SEAL	SPIRAL WOUND WIRE (SS316/GRAPHITE)		1
11	STEM BEARING	RPTFE		1
12	ANTI-STATIC DEVICE	SS316		2
13	TRAVEL STOP	SS304	ZINC PLATED CS	1
14	SNAP RING	SS304		1~2
15	HANDLE	JUNCTION HEAD (FCD) / PIPE GRIP (S15C)		1
16	BODY STUD	SS304 (B8)	CARBON STEEL (B7)	4~20
17	BODY NUT	SS304 (8)	CARBON STEEL (2H)	4~20
18	GLAND BOLT	SS304	CARBON STEEL	2
19	PACKING WASHER	50% PTFE / 50% SS316		6~20

## MODEL NUMBER BUILDER

**S72**   -    -   
       
**1 2 3 4 5 6**

1. Size
.50"
.75"
1"
1.25"
1.5"
2"
2.5"
3"
to
12"

2. Body Rating	Code
ASME Class 150	15
ASME Class 300	30

3. Body Mtrl.	Code
Stainless Steel CF8M-A	S
Carbon Steel WCB-A216	C

Other materials available via special order.

4. Seat	Code
TFM	1
RPTFE	2
PEEK	3
ALTA	4
PTFE	5

5. Operator	Code
Handle *	0
Gear Operator	1
Extended Handle	2

6. Option	Code
Fire Safe	FS
Secondary Packing	2P

Please contact VSI for more information on other available options.



### VSI Limited Product Warranty

This limited warranty applies in the United States to products manufactured by VSI, LLC. VSI, LLC. warrants the product purchased from it or its authorized reseller to be free from defects in material and workmanship under normal use during the two year warranty period from the date of its purchase. Other products not manufactured by VSI, LLC. which are provided as part of an assembly may carry additional warranties from that manufacturer or supplier.

During the warranty period, VSI, LLC. will repair or replace defective parts of the product, or, at VSI, LLC. sole option, issue a credit for the original purchase price of the product. Repaired or replaced product will be warranted hereunder only for the remaining portion of the original warranty period. All exchanged products under this Limited Warranty will become the property of VSI, LLC. A proper Return Material Authorization (RMA) number will have to be obtained for all products to be returned under this Limited Warranty. Any claim under this Limited Warranty must include a description of the problem encountered and any relevant information that may assist VSI, LLC. in the replication or resolution of the problem.

This Limited Warranty is transferable during its term to the end user of the product. Any transfer shall not extend or alter the terms of this Limited Warranty.

This Limited Warranty extends only to products purchased from VSI, LLC. or its authorized reseller and does not extend to any product that has been damaged or rendered defective as a result of (a) modification, repair, alteration or improper installation by any person other than VSI, LLC. or its authorized representative; (b) unreasonable or improper use or storage, use beyond rated conditions, operation other than per VSI, LLC. or the manufacturer's instructions, or being otherwise subjected to improper maintenance, negligence or accident; or (c) any use of the product after purchaser has knowledge of any defect in the product.

**The warranties provided above are in lieu of and exclude all other warranties, statutory, express or implied, including without limitation any warranty or merchantability or fitness for a particular purpose. VSI, LLC. expressly disclaims all warranties not stated in this limited warranty. Any implied warranties that may be imposed by law are limited to the terms of this limited warranty.**

VSI, LLC. warranty liability shall not exceed the original purchase price of the defective product. VSI, LLC. is not liable for any damages caused by the product or other products or the failure of the product or other products to perform, including any lost profits, lost savings, incidental or consequential damages. VSI, LLC. is not responsible for charges resulting from the removal and/or replacement of the product. VSI, LLC. is not liable for any claims made by third parties or by the purchaser for a third party. This limitation applies whether damages are sought, or a claim is made, under the Limited Warranty or as a tort claim, product liability claim, contract claim, or any other claim. This limitation cannot be waived by any person. This limitation of liability will be effective even if VSI, LLC. or its authorized representative has been advised by the purchaser of the possibility of such damages.

VSI, LLC.

tel: +1 (770) 740 0800

fax: +1 (770) 740 8777

email: [sales@valvesolutions.com](mailto:sales@valvesolutions.com)

Copyright © 2012 VSI, LLC.

[www.valvesolutions.com](http://www.valvesolutions.com)

As part of an on-going product development process, VSI reserves the right to amend or change specifications without prior notice. Published data may be subject to change. For the latest version, visit our website at [www.valvesolutions.com](http://www.valvesolutions.com)