

### SERIES L ACTUATOR

**MINIMUM AIR SUPPLY:** 20psig

**MAXIMUM AIR SUPPLY:** 30psig

**AIR CONSUMPTION:** 2 SCIM (0.55 mL/s)

**STROKE:**

D-3153 - 3 INCHES

D-3244 - 4 INCHES

D-3246 - 6 INCHES

**AMBIENT OPERATING CONDITIONS:**

-20 TO 150°F (-29° TO 66°C)

**BODY:** Die-cast Aluminum

**DIAPHRAGM:** Synthetic elastomer

**EFFECTIVE DIAPHRAGM:**

D-3153 - 15 inch<sup>2</sup> (97 cm<sup>2</sup>)

D-3244 & D-3246 - 23.4 inch<sup>2</sup> (151 cm<sup>2</sup>)

**SPRING RANGE (nominal):** 8 to 13 psig

**AIR CONNECTION:** 1/8" NPT Barbed fitting



### PILOT POSITIONER

**START POINT:** Adjustable from 2 to 12 psig

**SPAN:** Adjustable from 3 to 13 psi

**MAXIMUM AIR SUPPLY:** 25 psig

**AIR CONSUMPTION:** 5 SCIM (1.4 mL/s)

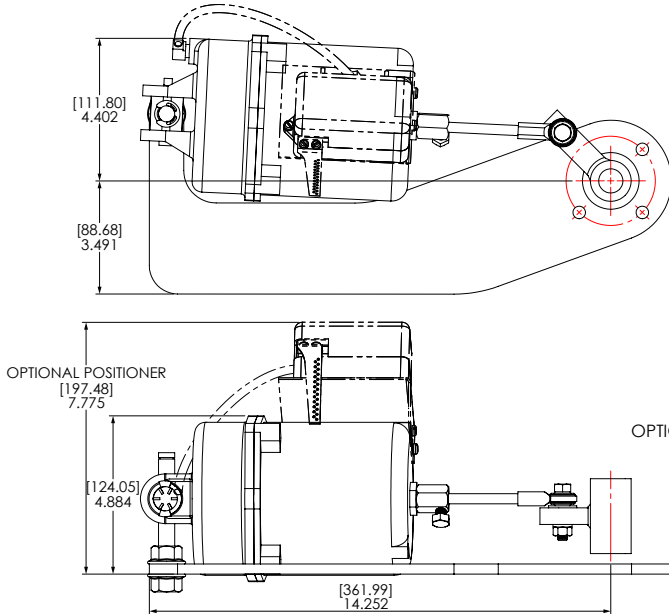
**AMBIENT OPERATING CONDITIONS:**

-20 TO 150°F (-29° TO 66°C)

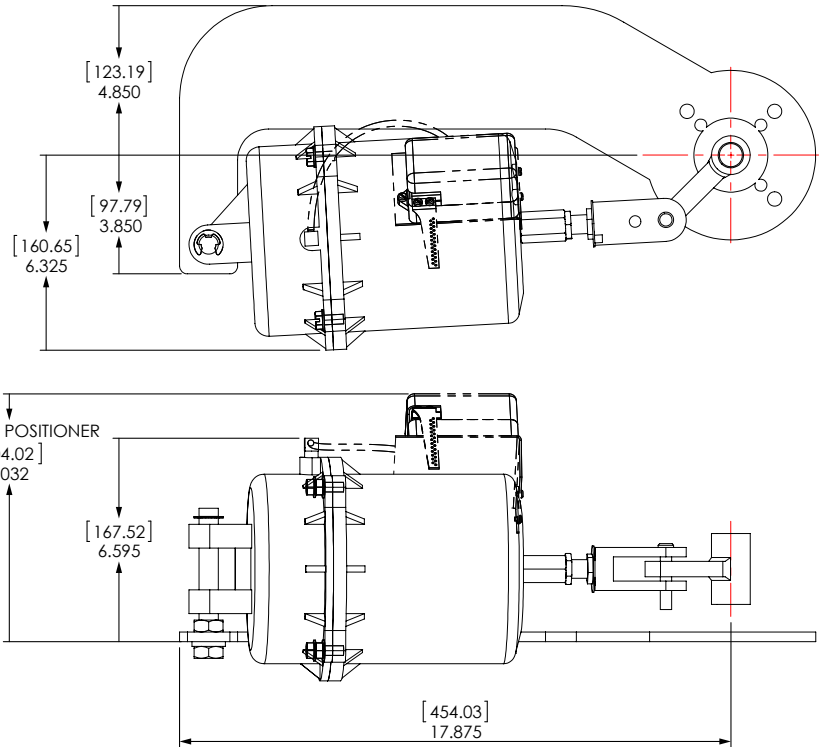
**AIR CONNECTION:** 1/8" NPT Barbed fitting

### DIMENSIONAL INFORMATION

D-3153-5130 - 2 POSITION  
D-3153-5120 - MODULATING



D-3244-5110 - 2 POSITION  
D-3244-5100 - MODULATING



D-3246-5100 - 2 POSITION  
D-3246-5110 - MODULATING

D-3246-5100X2 - 2 POSITION  
D-3246-5110X2 - MODULATING

