

BELIMO® Series TR 18 in-lb Non-Spring Return Valve Actuators

The Series TR Non-Spring Return electric actuator is available in On/Off or Floating Point and Modulating is manufactured by Belimo exclusively for Valve Solutions. It features the same characteristics of standard TR USA version actuators but is distinguishable by its VSI gray color and terminal strip connection.

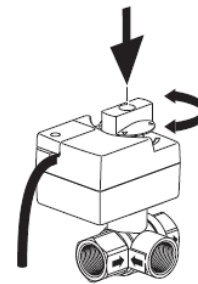


Part Numbers:

TR	18 in-lb Electric Actuator
24	24 VAC/VDC
-3	O/C or Floating Control
-SR	2-10VDC Modulating Control
-T	Terminal Strip Connection
VSI	Manufactured for VSI

Operation Overview:

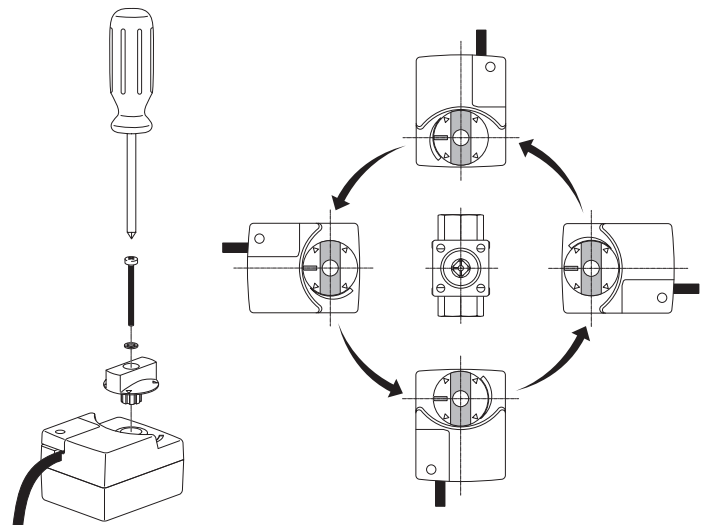
To use the manual override press downward on the handle and turn in the desired direction.



Electrical Ratings:

Model	TR24-3-T VSI	TR24-SR-T VSI
Voltage	24 VAC ±20%, 50/60 Hz	24 VAC ±20%, 50/60 Hz 24 VDC ±20%
Power Consumption	1W	0.5W
Transformer Sizing	1VA (Class 2)	1VA (Class 2)
Electrical Connection	Screw Terminal Strip	
Input Impedance	0.36 kΩ	100 kΩ
Angle of Rotation	90°	
Running Time	90 Seconds	
Position Indicator	Integrated into handle	
Manual Override	Push down handle	
Humidity	5 to 95% RH non-condensing	
Ambient Temperature Range	-22°F to +122°F	
Storage Temperature Range	-40°F to +176°F	
Housing	NEMA 1/IP40	
Housing Material	UL94-5V(B)	
Agency Listings	cULus acc. to UL60730-1A/-2-14, CAN/CSA E60730-1:02, CE acc. to 2004/108/EC and 2006/95/EC	
Noise Level (Motor)	<35 dB (A)	
Quality Standard	ISO 9001	

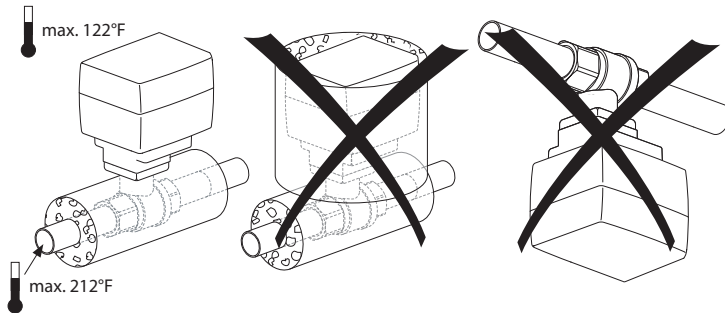
Actuator may be rotated upon valve in 90 degree increments to clear installation obstructions if needed. Remove Phillips head screw from center of handle, lift and rotate entire actuator, lower actuator into desired position and reinstall Phillips head screw.



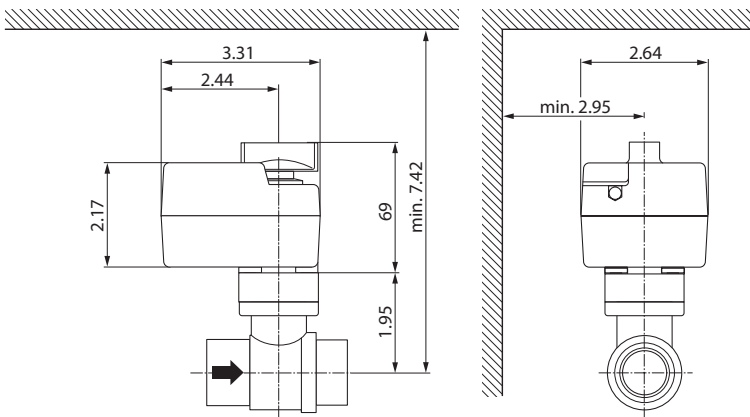
BELIMÓ® Series TR 18 in-lb Non-Spring Return Valve Actuators

Operation Overview (cont.):

Do not insulate around electric actuator. Assure ambient and line temperatures do not exceed ratings. Do not install with valve shaft facing downward; condensation may damage actuator.



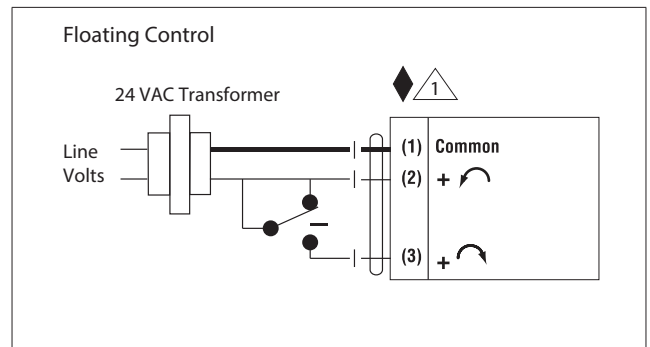
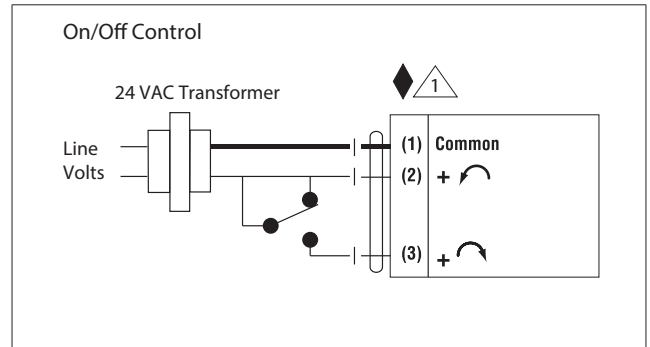
During installation insure that there is appropriate clearance around actuator. Rotate actuator upon valve or valve within the line to reach minimum air gap requirements.



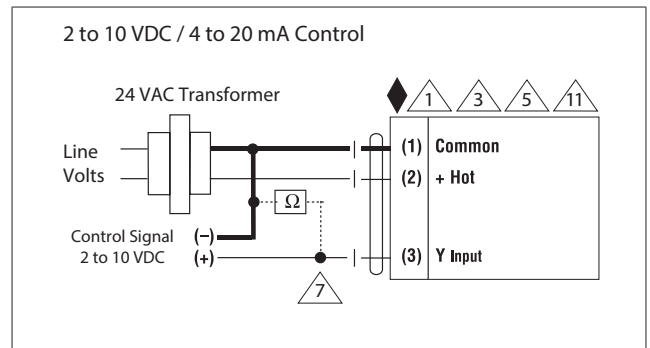
WARNING! LIVE ELECTRICAL COMPONENTS!

During installation, testing, servicing and troubleshooting of this product, it may be necessary to work with live electrical components. Have a qualified licensed electrician or other individual who has been properly trained in handling live electrical components perform these tasks. Failure to follow all safety precautions when exposed to live electrical components could result in death or serious injury.

TR24-3-T VSI Wiring Configurations:



TR24-SR-T VSI Wiring Configurations:



- ◆ Meets requirements without the need of an electrical ground connection.
- △1 Provide overload protection and disconnect as required.
- △3 Actuators may also be powered by 24 VDC.
- △5 Only connect common to negative (-) leg of control circuits.
- △7 A 500 Ω resistor converts the 4 to 20 mA control signal to 2 to 10 VDC.
- △11 Actuators may be connected in parallel if not mechanically mounted to the same shaft. Power consumption and input impedance must be observed.

