



## FEATURES

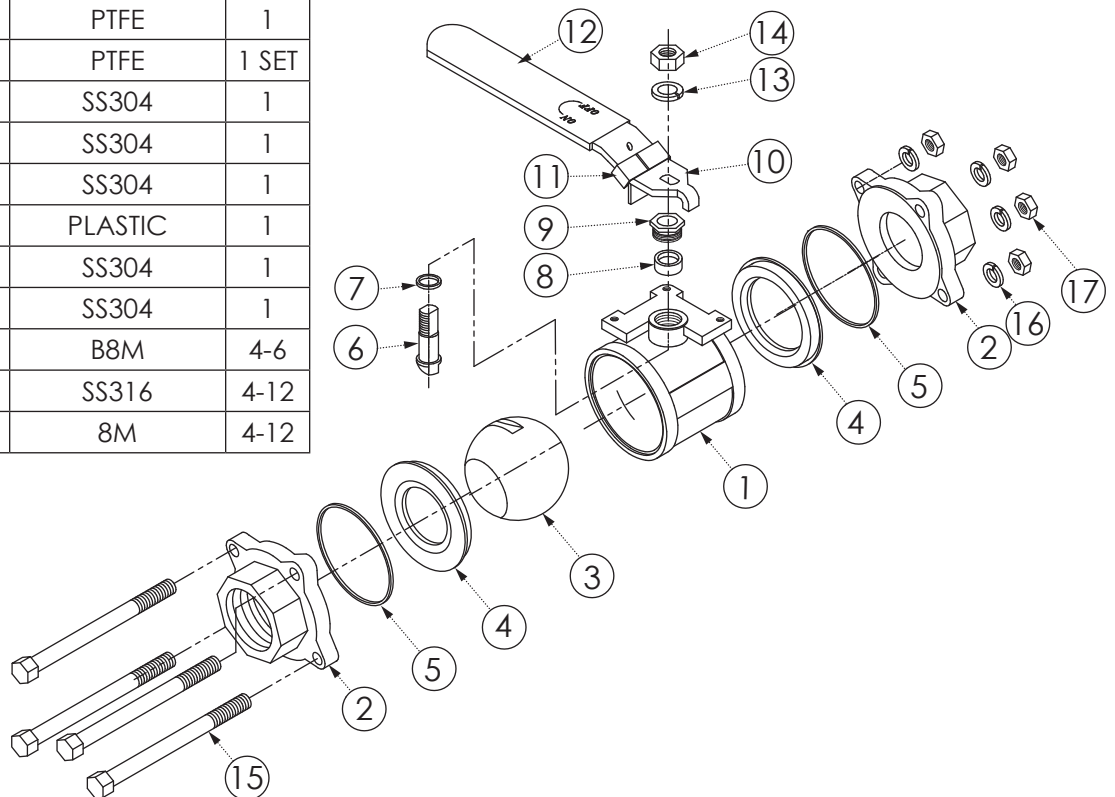
- THREE PIECE BALL VALVE
- FULL PORT BALLS
- FULL BORE BALLS
- 1500 WOG (1/4" - 2")
- 1000 WOG (2½" - 4")
- BLOW OUT PROOF STEM
- ADJUSTABLE STEM PACKING
- LOW OPERATING TORQUE
- QUICK LOCK HANDLE

## MATERIALS LIST

NO.	PART NAME	MATERIAL	QTY
1	BODY	A351-CF8M	1
2	END CAP	A351-CF8M	1
3	BALL	A351-CF8M	1
4	SEAT	RPTFE	2
5	BODY SEAL	PTFE	2
6	STEM	SS316	1
7	THRUST WASHER	PTFE	1
8	STEM PACKING	PTFE	1 SET
9	PACKING GLAND	SS304	1
10	LEVER	SS304	1
11	LEVER LOCK	SS304	1
12	LEVER COVER	PLASTIC	1
13	LOCK WASHER	SS304	1
14	NUT	SS304	1
15	BOLT	B8M	4-6
16	LOCK WASHER	SS316	4-12
17	NUT	8M	4-12

## STANDARDS

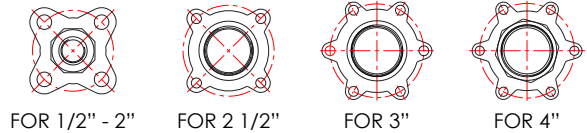
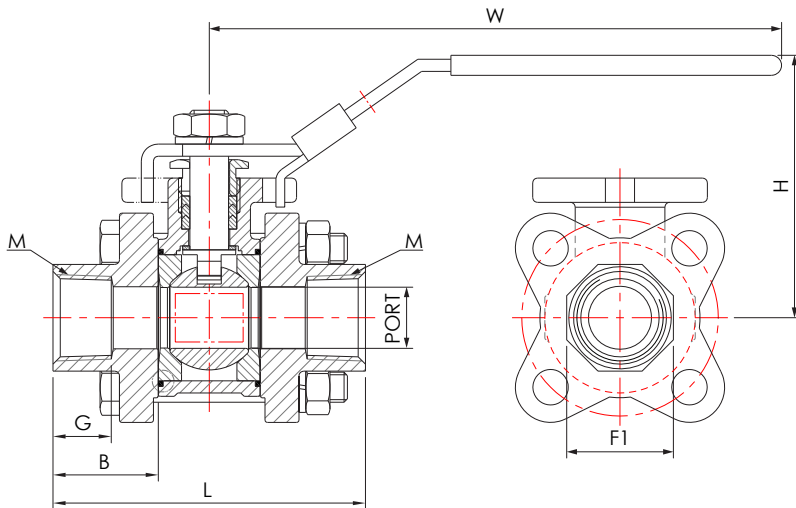
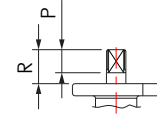
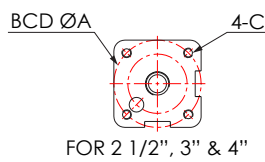
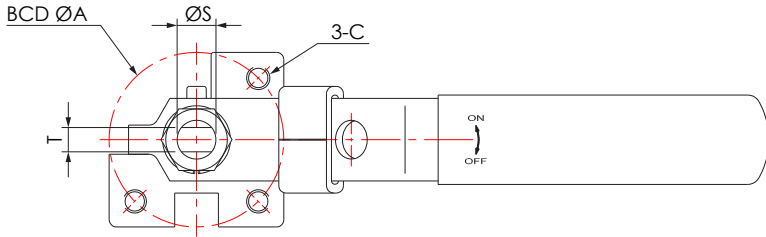
- NPT THREADS: ANSI B 1.20.1
- NACE MR 01-75
- ISO 5211 MOUNTING PAD



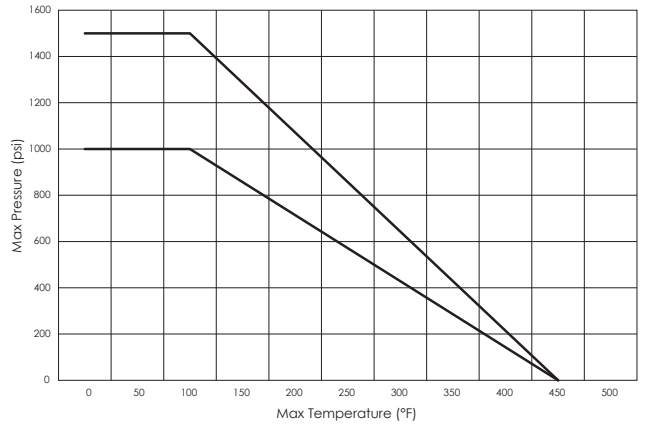
### SERIES 8500 3-PIECE BALL VALVE



# SERIES 8500 BALL VALVE



## PRESSURE vs. TEMP



SIZE	M	PORT	F1	G	B	L	H	W	A	C	ISO	ØS	T	P	R
1/4"	NPT	0.50	0.87	0.47	0.85	2.54	2.18	4.65	1.42	3/16-24 UNC	F03	0.31	0.20	0.37	0.55
3/8"	NPT	0.50	0.87	0.47	0.85	2.54	2.18	4.65	1.42	3/16-24 UNC	F03	0.31	0.20	0.37	0.55
1/2"	NPT	0.59	1.07	0.51	0.83	2.54	2.30	5.42	1.42	3/16-24 UNC	F03	0.37	0.25	0.52	0.75
3/4"	NPT	0.79	1.33	0.77	1.00	3.18	2.44	5.42	1.42	3/16-24 UNC	F03	0.37	0.25	0.52	0.74
1"	NPT	0.98	1.57	0.71	1.11	3.74	3.30	6.34	1.65	3/16-24 UNC	F04	0.44	0.31	0.71	0.98
1 1/4"	NPT	1.26	1.91	0.75	1.19	4.32	3.63	6.34	1.97	1/4-20 UNC	F05	0.44	0.31	0.71	0.96
1 1/2"	NPT	1.50	2.19	0.98	1.41	5.10	3.81	7.58	1.97	1/4-20 UNC	F05	0.50	0.35	0.74	1.04
2"	NPT	2.00	2.66	1.06	1.51	5.85	4.41	8.05	2.76	5/16-18 UNC	F07	0.50	0.35	0.74	1.07
2 1/2"	NPT	2.56	Ø3.46	1.34	1.91	7.20	5.47	10.91	4.02	5/16-18 UNC	F10	0.75	0.47	1.08	1.69
3"	NPT	3.15	Ø4.09	1.61	2.15	8.23	5.93	12.68	4.02	7/16-14 UNC	F10	0.75	0.47	1.08	1.46
4"	NPT	3.94	5.06	1.54	2.17	9.25	6.64	12.68	4.02	7/16-14 UNC	F10	1.00	0.63	1.55	2.05

**VALVE PART NUMBERS**      1" S8500-S2H

VALVE SIZE      S-STAINLESS

### SERIES 8500 3-PIECE BALL VALVE