



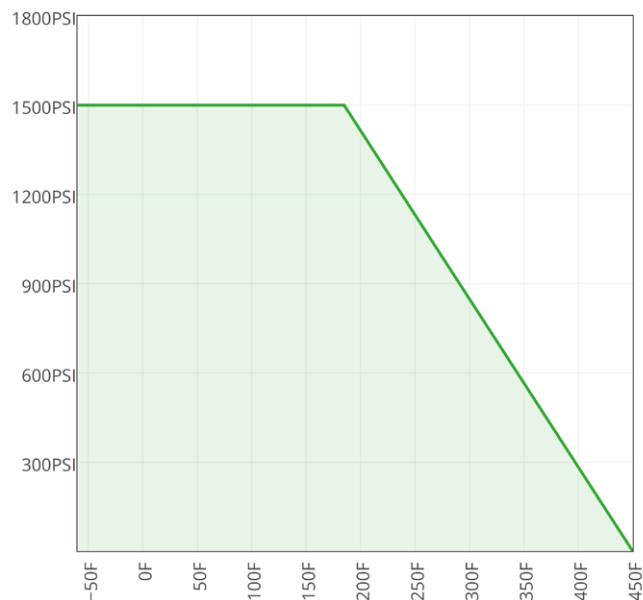
FEATURES

- THREE PIECE BALL VALVE
- GROOVE END CONNECTION
- FULL BORE BALLS
- L-PORT AND T-PORT OPTIONS
- 1500 WOG
- BLOW OUT PROOF STEM
- ADJUSTABLE STEM PACKING
- LOW OPERATING TORQUE
- QUICK LOCK HANDLE
- DOUBLE INTEGRATED ISO MOUNTING PAD

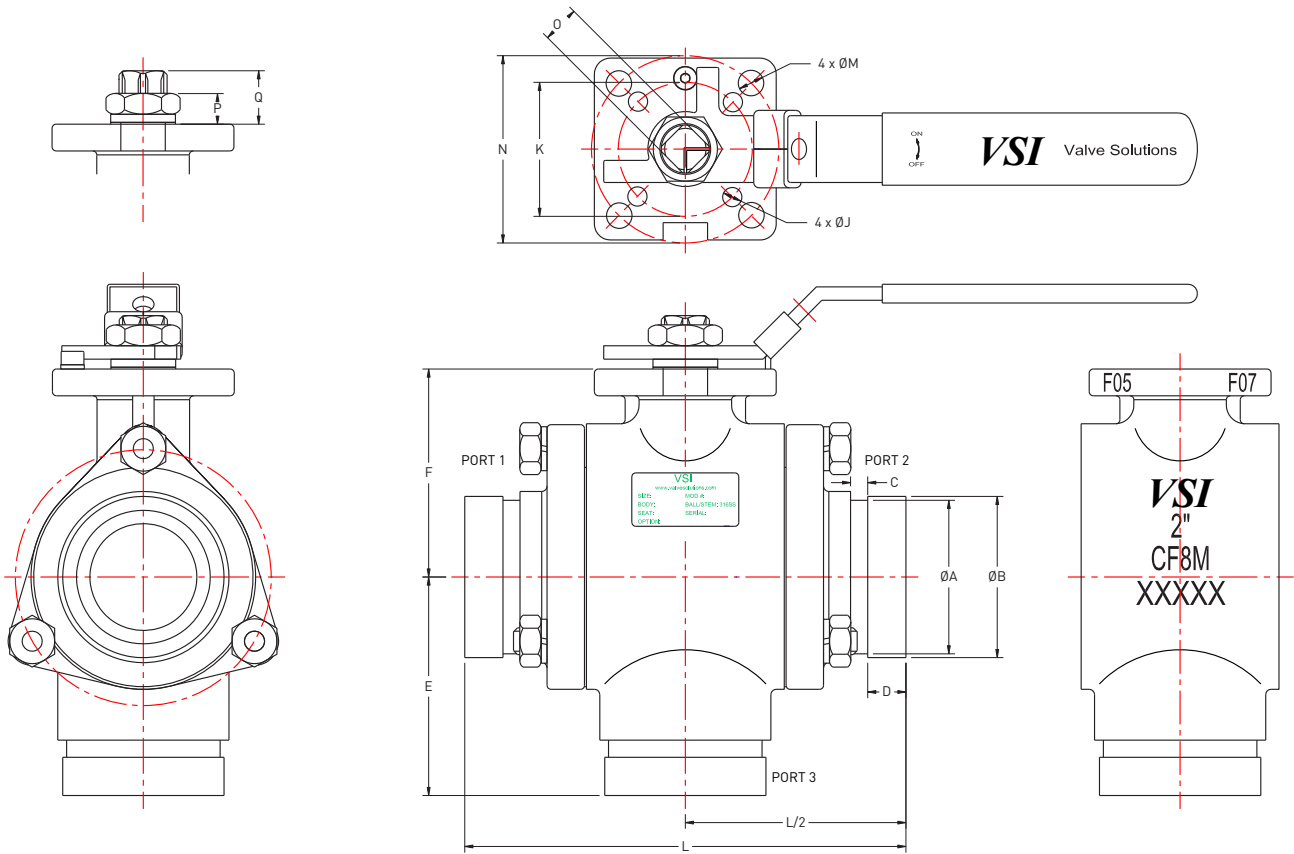
PRESSURE AND TEMPERATURE RATINGS

MATERIALS LIST

PART NAME	MATERIAL	
BODY	A351-CF8M	A216-WCB
END CAP	A351-CF8M	A216-WCB
BALL	SS316	
STEM	SS316	
SEAT	RPTFE	
BODY SEAL	PTFE	
STEM PACKING	PTFE	
STEM NUT	SS304	
HANDLE	SS304	
HANDLE LOCK	SS304	
HANDLE COVER	PLASTIC	
HARDWARE	SS304	



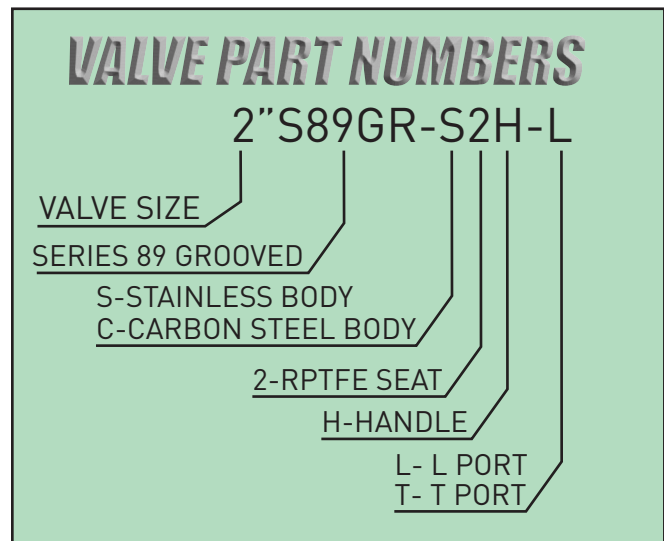
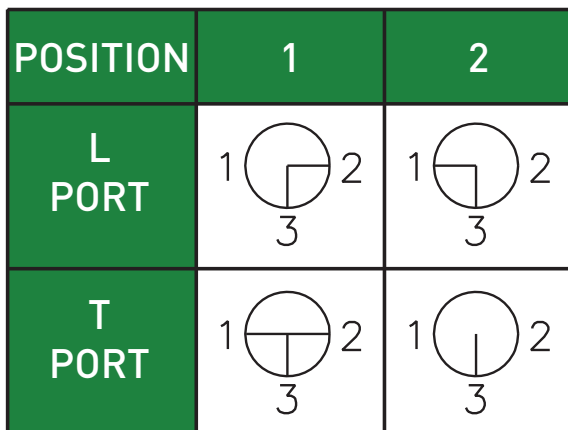
DIMENSIONS



DIMENSIONS (IN)

INCH	DIN (MM)	ØA	ØB	C	D	E	F	L	J	K	M	N	O	P	Q
2"	50	2.26	2.375	0.25	0.563	3.22	3.07	6.785	0.28	1.97	0.35	2.76	0.551	0.47	0.79

PORT DIAGRAM



SERIES 89GR 3-PIECE GROOVED BALL VALVE