



# SERIES 2120 - SERIES C

DIRECT ACTING HIGH PRESSURE PNEUMATIC ACTUATORS  
2" - 24" RESILIENT SEATED BUTTERFLY VALVES

## SERIES 2120 BUTTERFLY VALVE

**SERVICE:** Chilled/Hot Water - 50% Glycol  
**FLOW CHARACTERISTIC:** Modified EQ%  
**SIZES:** 2" - 24"  
**BODY:** Ductile Iron ASTM A536  
**BODY COATING:** Fusion Bonded Epoxy  
**BODY PRESSURE RATING:** ASME/ANSI Class 125  
**WORKING PRESSURE:** 250 PSI for -22°F to 100°F  
**END FITTING:** Lugged ANSI Class 125/150 Flanged  
**DISC:** 304SS  
**STEM:** 416SS  
**SEAT:** EPDM  
**O-RING:** EPDM  
**BUSHING:** PTFE  
**CLOSE OFF:** 200 PSI (2"-12") or 150 PSI (14"-24")  
**LEAKAGE:** Bubble Tight Shutoff  
**TEMPERATURE RANGE:** -22°F to 250°F  
**MAX FLUID VELOCITY:** 30 FPS

### ASCO 8551 Direct Mount Solenoid

Watt Rating and Power Consumption

DC Watts	AC Watts	VA Holding	VA Inrush
6.9	6.3	7	10.1

Temperature Range: AC 5°F to 140°F (-15°C to 60°C)  
 DC 5°F to 77°F (-15°C to 25°C)

### ALS-100 Limit Switch (Optional)

Position Indicator	Polycarbonate Dome
Switches	2x SPDT 5A 125-250 VAC micro-switches
Terminal Strip	Standard 8 Points
Cable Entry	2x 1/2" NPT
Mounting	NAMUR Standard shaft and bracket

### VRC Model V Series Positioner

VP - Pneumatic 3-15 PSI  
 VE - Electro-Pneumatic 4-20mA (Optional)

Position Indicator: Flat Lens  
 Dome Lens (Optional)

### PERFORMANCE

RESOLUTION	0.25% Maximum 0.10% Typical
REPEATABILITY	99.75% Minimum 99.90% Typical
HYSTERESIS	0.50% Maximum 0.25% Typical
LINEARITY	+/- 1.0% Maximum
GAIN @80 PSIG	250 Single-Acting 500 Double-Acting
AIR CONSUMPTION @80 PSIG	0.25 SCFM Standard Flow Spool Valve 0.45 SCFM Maximum Flow Spool Valve
TEMPERATURE RANGE	-40 to 150F / -40 to 65C

## SERIES C ACTUATOR

Rev. C

**MINIMUM AIR SUPPLY:** 40 psi  
**MAXIMUM AIR SUPPLY:** 130 psi  
**TORQUE RANGE:** 124 - 40519 in/lb (~80 psi)  
**HOUSING:** Die Cast Aluminum Alloy  
**TEMPERATURE:** 0°C to +80°C  
 -20°C to +80°C with dry air  
 -40°C to +150°C in special execution  
**OPERATING MEDIA:** Compressed filtered air  
**Standard NAMUR mounts for optional accessories**  
**DOUBLE ACTING OPERATION (DA)**

### CCW

Air is supplied to Port A forcing the pistons away from each other (towards ends), rotating the drive pinion counter-clockwise and exhausting air out of Port B

### CW

Air is supplied to Port B forcing the pistons toward each other (towards center), rotating the drive pinion clockwise and exhausting air out of Port A



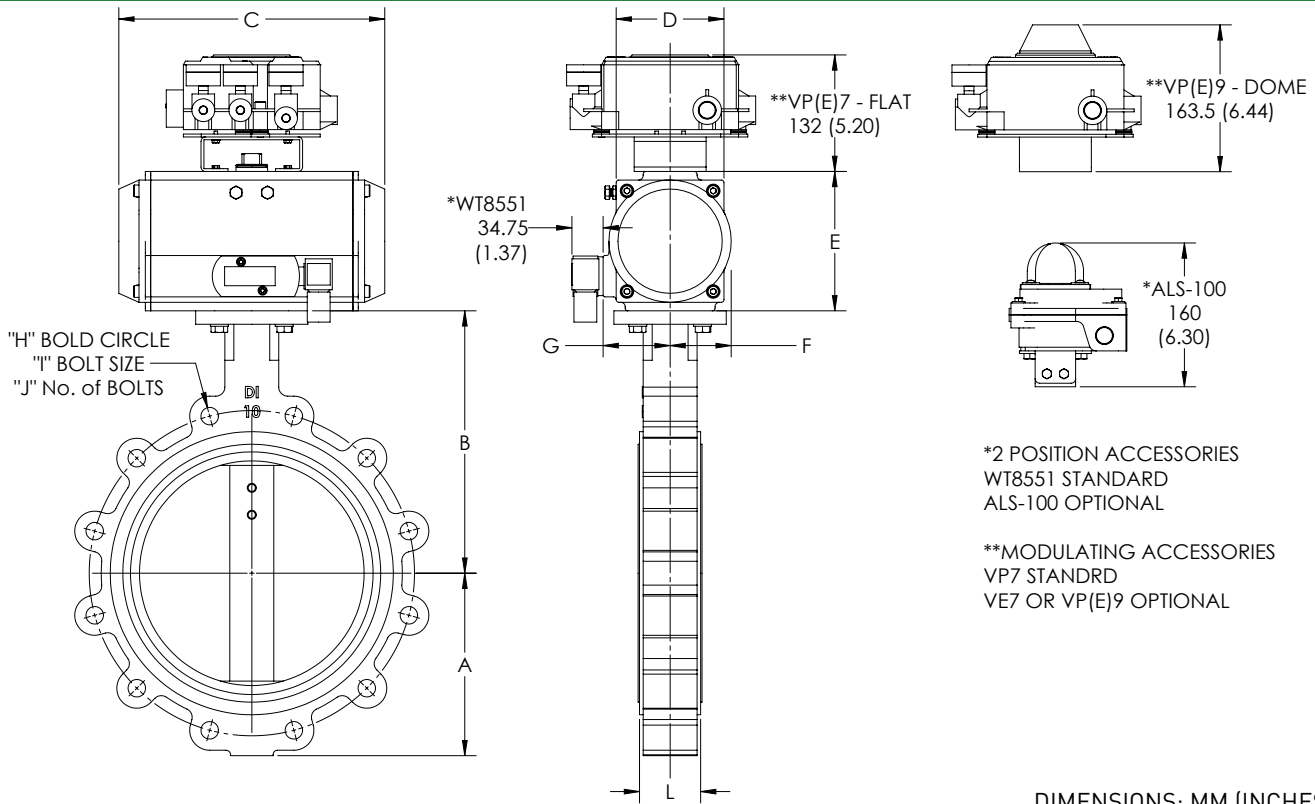
2 Position Configuration  
 Shown with optional limit switch



# SERIES 2120 - SERIES C

DIRECT ACTING HIGH PRESSURE PNEUMATIC ACTUATORS  
2" - 24" RESILIENT SEATED BUTTERFLY VALVES

## DIMENSIONAL INFORMATION



\*2 POSITION ACCESSORIES  
WT8551 STANDARD  
ALS-100 OPTIONAL

\*\*MODULATING ACCESSORIES  
VP7 STANDRD  
VE7 OR VP(E)9 OPTIONAL

DIMENSIONS: MM (INCHES)

PSI	VALVE SIZE		ACTUATOR	A	B	H	J x I	L	C	D	E	F	G
	INCH	DN											
200	2	50	C-DA063	80 (3.15)	161 (6.34)	4.75	4 x 5/8 - 11	43 (1.69)	168 (6.61)	72 (2.83)	87.5 (3.44)	36 (1.42)	47 (1.85)
	2.5	65	C-DA063	89 (3.50)	175 (6.89)	5.5	4 x 5/8 - 11	46 (1.81)	168 (6.61)	72 (2.83)	87.5 (3.44)	36 (1.42)	47 (1.85)
	3	75	C-DA063	95 (3.74)	181 (7.13)	6	4 x 5/8 - 11	46 (1.81)	168 (6.61)	72 (2.83)	87.5 (3.44)	36 (1.42)	47 (1.85)
	4	100	C-DA083	114 (4.49)	200 (7.87)	7.5	8 x 3/4 - 11	52 (2.05)	204 (8.03)	92 (3.62)	108.7 (4.28)	46 (1.81)	57 (2.24)
	5	125	C-DA092	127 (5.00)	213 (8.39)	8.5	8 x 3/4 - 10	56 (2.20)	262 (10.31)	98 (3.86)	116.5 (4.59)	50 (1.97)	58.5 (2.30)
	6	150	C-DA105	139 (5.47)	226 (8.90)	9.5	8 x 3/4 - 10	56 (2.20)	268 (10.55)	109.5 (4.31)	133 (5.24)	57.5 (2.26)	64 (2.52)
	8	200	C-DA125	175 (6.89)	260 (10.24)	11.75	8 x 3/4 - 10	60 (2.36)	301 (11.85)	127.5 (5.02)	155 (6.10)	67.5 (2.66)	74.5 (2.93)
	10	250	C-DA140	203 (7.99)	292 (11.50)	14.25	12 x 7/8 - 9	68 (2.68)	390 (15.35)	137.5 (5.41)	172 (6.77)	75 (2.95)	77 (3.03)
	12	300	C-DA160	242 (9.53)	337 (13.27)	17	12 x 7/8 - 9	78 (3.07)	458 (18.03)	158 (6.22)	197 (7.76)	87 (3.43)	87 (3.43)
150	14	350	C-DA160	267 (10.51)	368 (14.49)	18.75	12 x 1 - 8	78 (3.07)	458 (18.03)	158 (6.22)	197 (7.76)	87 (3.43)	87 (3.43)
	16	400	C-DA190	297 (11.69)	400 (15.75)	21.25	16 x 1 - 8	102 (4.02)	525 (20.67)	189 (7.44)	230 (9.06)	103 (4.06)	103 (4.06)
	18	450	C-DA240	318 (12.52)	422 (16.61)	22.75	16 x 1 1/8 - 7	114 (4.49)	602 (23.70)	245 (9.65)	319 (12.56)	130 (5.12)	130 (5.12)
	20	500	C-DA240	348.00 (13.70)	480.00 (18.90)	25	20 x 1 1/8 - 7	127.00 (5.00)	602 (23.70)	245 (9.65)	319 (12.56)	130 (5.12)	130 (5.12)
	24	600	C-DA300	444.00 (17.48)	562.00 (22.13)	29.5	20 x 1 1/4 - 7	154.00 (6.06)	742 (29.21)	324 (12.76)	348 (13.70)	162 (6.38)	162 (6.38)