



SERIES V - SERIES 1000-X

INDUSTRIAL 2 POSITION ELECTRIC ACTUATORS
8" - 12" HIGH PERFORMANCE SEGMENTED BALL VALVES

REV. A

SERIES V BALL VALVE

SERVICE: Chilled/Hot Water - 50% Glycol
Steam: 125 psi

FLOW CHARACTERISTIC: Equal %

SIZES: 8" - 12"

BODY: Carbon Steel

BALL: 304SS

SHAFT: 304SS

SEAT: TFM 1700

O-RING: ALFAS

BEARING: PEEK

TEMPERATURE RANGE: -20°F to 400°F

CLOSE OFF: 285PSI

END CONNECTIONS:

8" - 12" : ANSI 150 Flanged



SERIES 1000-X 2 POSITION ACTUATOR

Non-Spring Return Electric 2 Pos/Floating Actuator

MOTOR: 120VAC, 220VAC or 24VAC (24VAC for 8" Only)

TORQUE RANGE: 3,540 - 8,851 in/lbs

HOUSING: Die Cast Aluminum - NEMA 4

PROTECTION: Thermal Overload Protection

LIMIT SWITCHES: 2x SPDT Aux. Limit Open/Closed

POSITION INDICATOR: Mechanical Dome

CONDUIT ENTRIES: 2 x 1/2" NPT

POWER GEARS: Alloy Steel and Aluminum Bronze

BEARINGS: Alloy Steel Sleeve and Ball Bearings

CERTIFICATIONS: CE, NRTL, NEMA 4, CSA File 226201

INTERNAL HEATER: Standard

MANUAL OVERRIDE POWER SWITCH: Standard on all units except 24V models

MANUAL OVERRIDE: Allen Handle Standard
Optional Handwheel

SERIES 1000-X SPECIFICATIONS - 2 POSITION

MODEL	1040-X	1060-X	1100-X
Output Torque (in-lb)	3540	5310	8851
Output Torque (Nm)	400	600	1000
Duty Cycle	80%	80%	%
Travel Speed @ 60Hz (Sec)	30	45	30
Max Current (Amp @ 110/220VAC)	3.41/1.78	3.60/1.87	3.80/2.12
Run Current (AMP @ 110/220VAC)	1.12/0.57	1.18/0.60	1.93/0.94
Max Current (Amp @ 24VAC)	7.25	N/A	N/A
Run Current (Amp @ 24VAC)	6.9	N/A	N/A
Enclosure Rating	WATERTIGHT NEMA 4		

SERIES V with MODULATING ACTUATORS

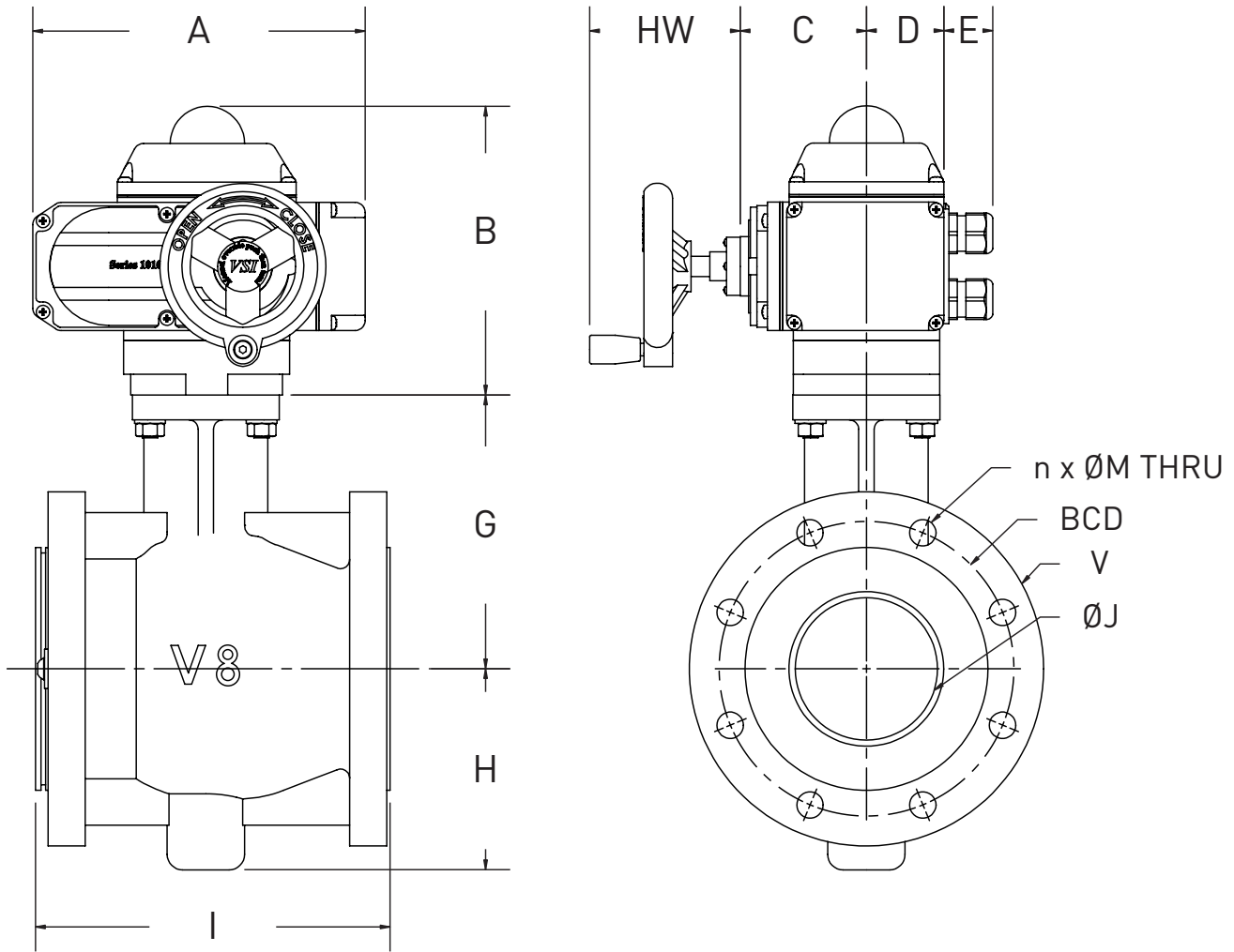
INCH	DIN (MM)	BODY	Cv 75°	Cv 90°	VSI PN
8"	200	150	865	1455	V-08/1040-X-24VAC
					V-08/1040-X
10"	250	150	1550	2600	V-10/1060-X
12"	300	150	1905	3200	V-12/1100-X



SERIES V - SERIES 1000-X

INDUSTRIAL 2 POSITION ELECTRIC ACTUATORS
8" - 12" HIGH PERFORMANCE SEGMENTED BALL VALVES

REV. A



VALVE SIZE		A	B	C	D	E	HW	V	G	H	I	J	BCD	n x M
IN	DN (MM)													
8	200	255 (10.04)	218 (8.58)	95 (3.74)	63 (2.48)	24 (0.95)	87 (3.43)	154 (6.06)	232 (9.13)	184 (7.24)	243 (9.57)	345 (13.58)	298.5 (11.75)	8 x 7/8"
10	250	255 (10.04)	218 (8.58)	95 (3.74)	63 (2.48)	24 (0.95)	87 (3.43)	254 (10.00)	260 (10.24)	222 (8.74)	295 (11.61)	405 (15.94)	362 (14.25)	12 x 1"
12	300	310 (12.21)	244 (9.61)	130 (5.12)	87 (3.43)	24 (0.95)	87 (3.43)	259 (10.19)	303 (11.93)	256 (10.08)	338 (13.31)	485 (19.09)	432 (17.00)	12 x 1"

VALVE SIZE		ASSEMBLY WEIGHT
IN	DN (MM)	
8	200	175 lbs
10	250	240 lbs
12	300	368 lbs