



SERIES V - SERIES C

DIRECT ACTING HIGH PRESSURE PNEUMATIC ACTUATORS
8"-12" HIGH PERFORMANCE SEGMENTED BALL VALVES

REV. A

SERIES V BALL VALVE

SERVICE: Chilled/Hot Water - 50% Glycol
Steam: 125 psi

FLOW CHARACTERISTIC: Equal %

SIZES: 8" - 12"

BODY: Carbon Steel

BALL: 304SS

SHAFT: 304SS

SEAT: TFM 1700

O-RING: ALFAS

BEARING: PEEK

TEMPERATURE RANGE: -20°F to 400°F

CLOSE OFF: 285PSI

END CONNECTIONS: ANSI 150 Flanged



SERIES C ACTUATOR

MINIMUM AIR SUPPLY: 40 psi

MAXIMUM AIR SUPPLY: 130 psi

TORQUE RANGE: 124 - 40519 in/lb (~80 psi)

HOUSING: Die Cast Aluminum Alloy

TEMPERATURE: 0°C to +80°C

-20°C to +80°C with dry air

-40°C to +150°C in special execution

OPERATING MEDIA: Compressed filtered air

Standard NAMUR mounts for optional accessories

DOUBLE ACTING OPERATION (DA)

CCW

Air is supplied to Port A forcing the pistons away from each other (towards ends), rotating the drive pinion counter-clockwise and exhausting air out of Port B

CW

Air is supplied to Port B forcing the pistons toward each other (towards center), rotating the drive pinion clockwise and exhausting air out of Port A

OPTIONAL CONTROL ACCESSORIES

2-POSITION OPEN/CLOSE

The Series C actuator can simply be controlled by applying pressure directly to the ports with the visual position indicator showing current position. Alternatively the following accessories are available:

- ASCO WT8551 or other solenoid valve to control the valve with an electrical signal.
- The VSI Series ALS-100 or other limit switch box to provide remote indication of open/close position
- Speed control mufflers to control movement speed

MODULATION POSITION CONTROL

For modulating control the Series C actuator can be provided with P-P pneumatic or E-P electro-pneumatic positioners. Enclosure ratings and other features to match project requirements are available.

*Additional control accessories available on request

SERIES V with DIRECT ACTING ACTUATORS

INCH	DN(MM)	BODY	Cv 75°	Cv 90°	VSI PART NUMBER
8"	200	150	865	1455	V-8/C-DA125
10"	250	150	1550	2600	V-10/C-DA140
12"	300	150	1905	3200	V-12/C-DA160

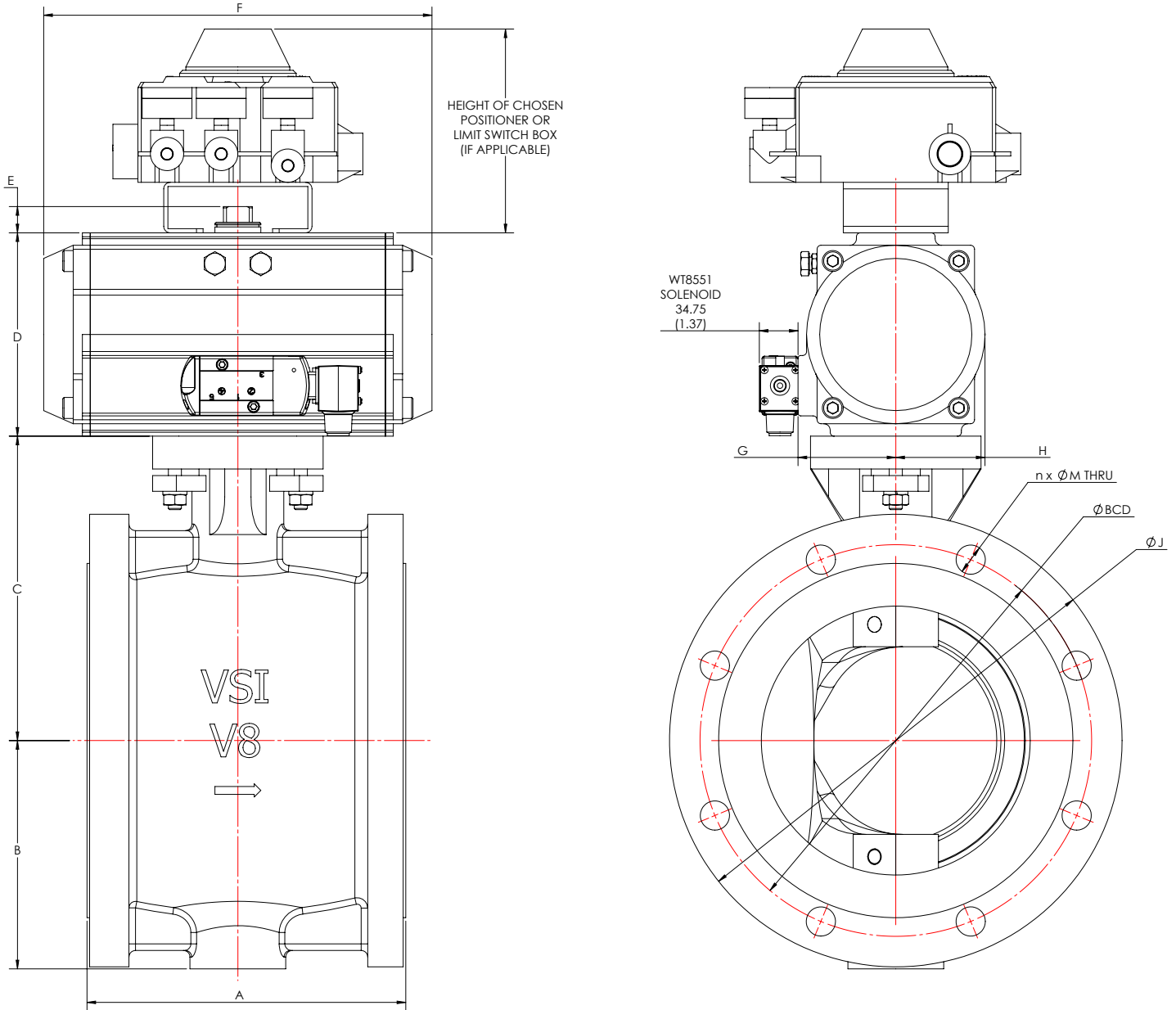
ASCO 8551 Direct Mount Solenoid (Optional)

Watt Rating and Power Consumption			
DC Watts	AC Watts	VA Holding	VA Inrush
6.9	6.3	7	10.1
Temperature Range: AC 5°F to 140°F [-15°C to 60°C] DC 5°F to 77°F [-15°C to 25°C]			

ALS-100 Limit Switch (Optional)

Position Indicator	Polycarbonate Dome
Switches	2x SPDT 5A 125-250 VAC micro-switches
Terminal Strip	Standard 8 Points
Cable Entry	2x 1/2" NPT
Mounting	NAMUR Standard shaft and bracket

DIMENSIONAL INFORMATION



DIMENSIONS: ^{MM}_[INCHES]

VALVE SIZE		ACTUATOR	A	B	C	D	E	F	G	H	J	BCD	n x M
INCH	DN												
8	200	C-DA125	243 [9.57]	174 [6.85]	232 [9.13]	145.5 [5.73]	20 [0.79]	301 [11.85]	74.5 [2.93]	67.5 [2.66]	345 [13.58]	298.5 [11.75]	8 x 7/8"
10	250	C-DA140	297 [1.69]	212 [8.35]	260 [10.24]	161 [6.34]	20 [0.79]	390 [15.35]	77 [3.03]	75 [2.95]	405 [15.94]	362 [14.25]	12 x 1"
12	300	C-DA160	338 [13.31]	256 [10.08]	303 [11.93]	184 [7.24]	20 [0.79]	458 [18.03]	87 [3.43]	87 [3.43]	485 [19.09]	432 [17.00]	12 x 1"

*Additional control accessories available on request