



SERIES V - SERIES C

SPRING RETURN HIGH PRESSURE PNEUMATIC ACTUATORS 1" - 6" HIGH PERFORMANCE SEGMENTED BALL VALVES

SERIES V BALL VALVE

SERVICE: Chilled/Hot Water - 50% Glycol
Steam: 125 psi

FLOW CHARACTERISTIC: Equal %

SIZES: 1" - 6"

BODY: Carbon Steel / Stainless Steel Optional

BALL: 304SS

SHAFT: 304SS

SEAT: TFM 1700

O-RING: ALFAS

BEARING: PEEK

TEMPERATURE RANGE: -20°F to 400°F

CLOSE OFF: 250PSI

END CONNECTIONS:

1" - 2" : NPT/Wafer ANSI 150/300

3" - 6" : ANSI 150 Flanged or ANSI 300 Flanged

ASCO 8551 Direct Mount Solenoid

Watt Rating and Power Consumption

DC Watts	AC Watts	VA Holding	VA Inrush
6.9	6.3	7	10.1

Temperature Range: AC 5°F to 140°F (-15°C to 60°C)
DC 5°F to 77°F (-15°C to 25°C)

ALS-100 Limit Switch (Optional)

Position Indicator	Polycarbonate Dome
Switches	2x SPDT 5A 125-250 VAC micro-switches
Terminal Strip	Standard 8 Points
Cable Entry	2x 1/2" NPT
Mounting	NAMUR Standard shaft and bracket

VRC Model V Series Positioner

VP - Pneumatic 3-15 PSI

VE - Electro-Pneumatic 4-20mA (Optional)

Position Indicator: Flat Lens - Dome Lens (Optional)

PERFORMANCE

RESOLUTION	0.25% Maximum 0.10% Typical
REPEATABILITY	99.75% Minimum 99.90% Typical
HYSTERESIS	0.50% Maximum 0.25% Typical
LINEARITY	+/- 1.0% Maximum
GAIN @80 PSIG	250 Single-Acting 500 Double-Acting
AIR CONSUMPTION @80 PSIG	0.25 SCFM Standard Flow Spool Valve 0.45 SCFM Maximum Flow Spool Valve
TEMPERATURE RANGE	-40 to 150F / -40 to 65C

SERIES C ACTUATOR

Rev. B

MINIMUM AIR SUPPLY: 40 psi

MAXIMUM AIR SUPPLY: 130 psi

TORQUE RANGE: 124 - 40519 in/lb (~80 psi)

HOUSING: Die Cast Aluminum Alloy

TEMPERATURE: 0°C to +80°C

-20°C to +80°C with dry air

-40°C to +150°C in special execution

OPERATING MEDIA: Compressed filtered air

Standard NAMUR mounts for optional accessories

SPRING RETURN OPERATION (SR)

FAIL CCW

Air is supplied to Port A forcing the pistons away from each other (towards ends), rotating the drive pinion counter-clockwise, compressing the springs and exhausting air out of Port B

FAIL CW

Air failure (loss of pressure) allows the compressed springs to force the pistons toward each other (towards center), rotating the drive pinion clockwise and exhausting air out of Port A

Modulating
Shown with VP7 Positioner



SERIES V with DIRECT ACTING ACTUATORS

INCH	DN(MM)	BODY	Cv 75°	Cv 90°	VSI PART NUMBER
1"	25	150/300	24	31	V-01/C-SR063/WT8551
					V-01/C-SR063/VP7
1.5"	40	150/300	55	73	V-15/C-SR063/WT8551
					V-15/C-SR063/VP7
2"	50	150/300	77	96	V-02/C-SR083/WT8551
					V-02/C-SR083/VP7
3"	80	150	207	270	V-03/C-SR083/WT8551
					V-03/C-SR083/VP7
4"	100	150	350	529	V-04/C-SR105/WT8551
					V-04/C-SR105/VP7
6"	150	150	507	850	V-06/C-SR125/WT8551
					V-06/C-SR125/VP7

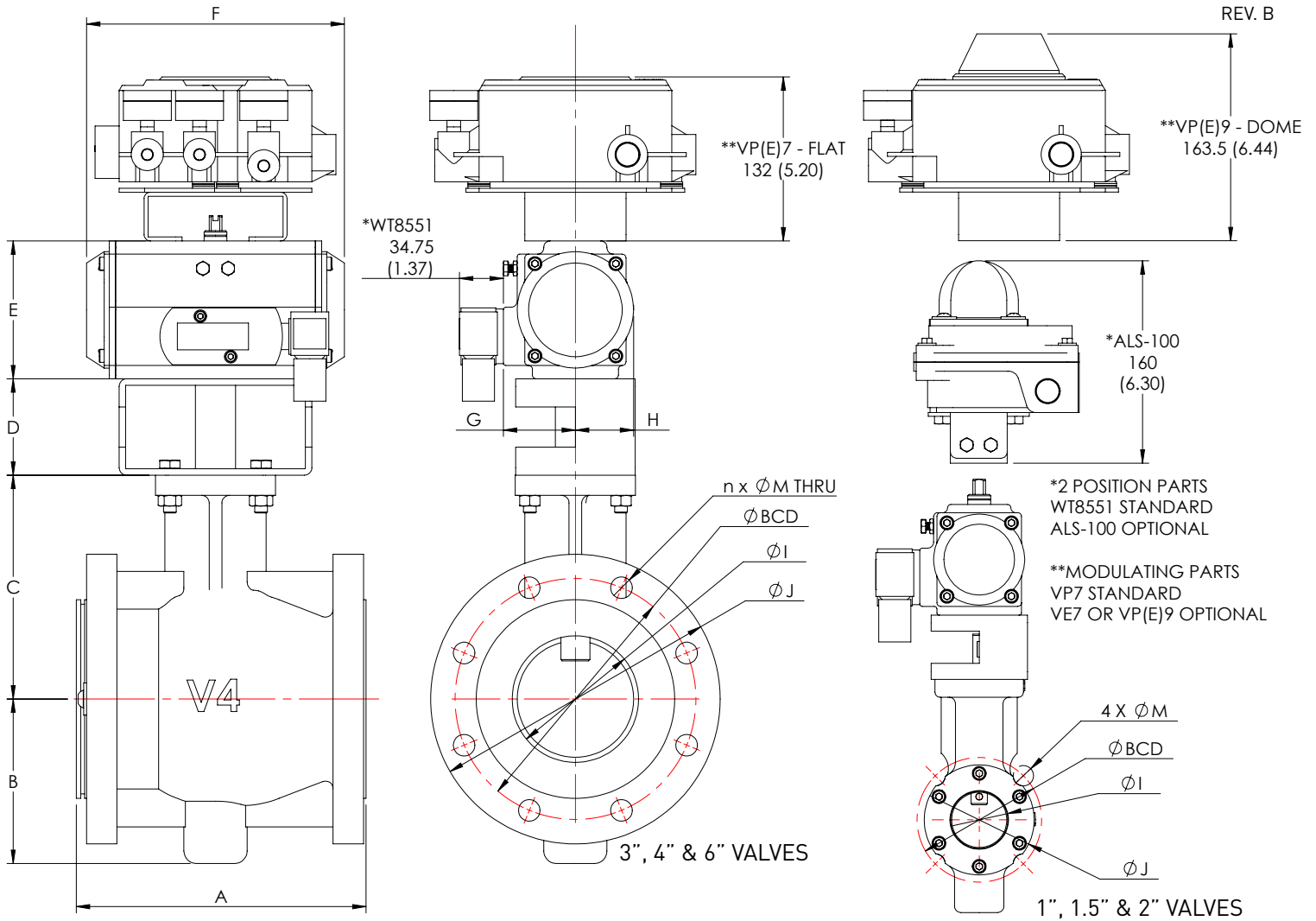
Please specify fail position and solenoid voltage when ordering.



SERIES V - SERIES C

SPRING RETURN HIGH PRESSURE PNEUMATIC ACTUATORS
1" - 6" HIGH PERFORMANCE SEGMENTED BALL VALVES

DIMENSIONAL INFORMATION



DIMENSIONS: ^{MM}
INCHES

VALVE SIZE		ACTUATOR	A	B	C	D	E	F	G	H	I	J	BCD	n x M
INCH	DN													
1	25	C-SR063	127 5	65 2.56	101 3.98	50.8 2.00	87.5 3.44	168 6.61	47 1.85	36 1.42	1" NPT	ϕ 70 2.76	ϕ 79.5 3.13	4 x 16
1.5	40	C-SR063	165 6.5	73.2 2.88	166.8 6.57	50.8 2.00	87.5 3.44	168 6.61	47 1.85	36 1.42	1.5" NPT	ϕ 87 3.43	ϕ 98.5 3.88	4 x 16
2	50	C-SR083	178 7	91.5 3.60	128.5 5.06	50.8 2.00	108.7 4.28	204 8.03	57 2.24	46 1.81	2" NPT	ϕ 101 3.98	ϕ 127 5	4 x 19
3	80	C-SR083	203 8	110 4.33	152 5.98	76.2 3.00	108.7 4.28	204 8.03	57 2.24	46 1.81	ϕ 75 2.95	ϕ 190.5 7.5	ϕ 152.4 6	4 x 3/4"
4	100	C-SR105	229 9	130 5.12	177 6.97	76.2 3.00	133 5.24	268 10.55	64 2.52	57.5 2.26	ϕ 100 3.94	ϕ 229 9	ϕ 190.5 7.5	8 x 3/4"
6	150	C-SR125	266.5 10.5	152.5 6.00	202.7 7.98	76.2 3.00	155 6.10	301 11.85	74.5 2.93	67.5 2.66	ϕ 154 6.06	ϕ 279 11	ϕ 241.3 9.5	8 x 7/8"